

ELTHAM PUBLIC SCHOOL

HELPING EACH OTHER GROW

TERM 2, WEEK 3 2025
NEWSLETTER



<https://eltham-p.schools.nsw.gov.au/>



Boatharbour Road, Eltham NSW 2480



02 6629 1321



Eltham
Public School

Kindergarten
2026

VISIT OUR WEBSITE TO ENROL
eltham-p.schools.nsw.gov.au

Boatharbour Rd, Eltham NSW 2480
(02) 6629 1321 eltham-p.school@det.nsw.edu.au

TERM 2, WEEK 3 2025

From the Principal

Welcome to what has been the beginning of an extremely wet Term 2. You may have noticed the brand new soft fall underneath the equipment has been finished. It looks fantastic and it will be reopened for students to use from today. Mrs Gray and I described it as 'feeling like heaven' today, it really is level, smooth and lovely to look at! Unfortunately the sports court is still out of action, and I am hopeful the trees will be removed within the next week, ready for a clean and to be fully reopened. Due to the amount of rain we've had and limited play areas due to the soggy grass, we have opened half of the sports court (the far end of the tree) this week.

In Week 1, staff attended two development days to begin the term. The first was an important state-wide initiative: High Potential and Gifted Education (HPGE). This aligns with the NSW Department of Education's commitment to ensuring that every student is recognised, valued, and supported. Our school is focused on ensuring that all students are appropriately challenged and guided to achieve their full potential. Staff participated in various professional learning sessions designed to deepen their understanding of the implementation of curriculum for high potential and gifted learners.

Day 2 involved staff inputting and analysing student data to improve outcomes for students and targeted focus areas for teaching in reading. We discussed effective strategies for numeracy assessment and updated our current reporting to parents format.

I hope everyone enjoyed a lovely Mother's Day over the weekend! It's a special time to celebrate and appreciate the incredible mothers and mother figures in our lives. Thank you to Ms Watson and the Leadership team who ran our Mother's Day stall over the past week. The gifts chosen by them to sell were thoughtful and beautiful, I've seen a few Mums wearing the pretty earrings this week.



Attendance

Regular attendance has countless benefits for your child's learning and development. Parents play an important role in ensuring students get to school and stay in school every day. The more your child attends school the greater their opportunity to learn, create social connections and improve their wellbeing.

WHAT YOU CAN DO

Building positive attendance habits

You can help build positive attendance habits by:

- helping your child learn the importance of punctuality and routine
- making sure your child arrives on time from the start of the school day, ready to take part
- reducing disruption to learning where you can, by planning any necessary appointments outside of school time
- contacting your school to explain any absences (on the day - via Parent Portal, or a phone call to the office)
- making sure any holidays or medical appointments are taken outside school hours
- working with the school to encourage and support regular attendance.

If you have **difficulty getting your child to school on time every day**, please contact school. We are here to support you and your child to help them come to school every day. Late arrival to school has an impact on your child's attendance rate.

Eltham Attendance rates - Term 2

Eltham Public School's Attendance goal is for every student to attend school for **90% or more** of the time. Did you know, you can check your child's attendance rate on the Parent Portal App? Our weekly average attendance rates for this term so far are:

Week 1 - 91.8%

Week 2 - 93.6%

We are off to a fantastic start for Term 2 with our attendance rate above 90%. Congratulations everyone, every day really does matter!

Common non-attendance - Supporting regular school attendance

Attending school every day allows your child to get the most out of their learning and to fully participate in a range of school activities. This includes attending school on rainy days/for a full day/sports carnivals/Fridays/birthday celebrations or other events. Read more about the benefits of regular attendance on the [department website](#). Students with attendance under 90% may impact them attending extra curricular school events.

WHAT'S ON THIS FORTNIGHT



MONDAY

12

Sushi orders due

Tuck shop open
Newsletter Day
P & C Meeting - Zoom from 6:30pm

TUESDAY

13

WEDNESDAY

14

Tuck shop open

THURSDAY

15

AUTHOR VISIT - ALEESAH DARLISON

Sushi Day

FRIDAY

16

GRIP LEADERSHIP CONFERENCE AT SCU

Sport - Tennis at Clunes
Tuck shop open

MONDAY

19

Sushi orders due

Tuck shop open

TUESDAY

20

WEDNESDAY

21

Tuck shop open

THURSDAY

22

Sushi Day

FRIDAY

23

Tuck shop open

Diary Dates Term 2 2025

Week 3	12 MAY Newsletter P & C Meeting 6:30pm Zoom 	13 MAY	14 MAY	15 MAY Author Visit - Aleesah Darlison 	16 MAY Sport - Tennis GRIP Leadership Conference 
	19 MAY	20 MAY	21 MAY National Simultaneous Storytime 	22 MAY	23 MAY
	26 MAY Newsletter National Sorry Day 	27 MAY National Reconciliation Week 	28 MAY National Reconciliation Week 	29 MAY National Reconciliation Week 	30 MAY National Reconciliation Week 
	2 JUNE National Reconciliation Week 	3 JUNE P & C Meal Deal 	4 JUNE	5 JUNE	6 JUNE
	9 JUNE	10 JUNE	11 JUNE	12 JUNE	13 JUNE
Week 7	16 JUNE	17 JUNE	18 JUNE	19 JUNE	20 JUNE  Reports home
	23 JUNE	24 JUNE	25 JUNE	26 JUNE	27 JUNE
	30 JUNE Newsletter NAIDOC Week 	1 JULY NAIDOC Week 	2 JULY NAIDOC Week 	3 JULY NAIDOC Week 	4 JULY NAIDOC Week Mufti Day & Celebration Assembly 2pm 

GEM Chats

Empathy

CREATING WELLBEING HABITS & CONNECTION

GEM Chats help families practice The Resilience Project's principles, offering a simple wellbeing check-in while **building stronger connections through daily conversations**.

HOW TO USE GEM CHATS

Make GEM Chats a part of your dinner routine to reflect, check in, and practice empathy.

Try these prompts:



Thank each family member for something they've **done or said** today.



Give each family member a **compliment**.



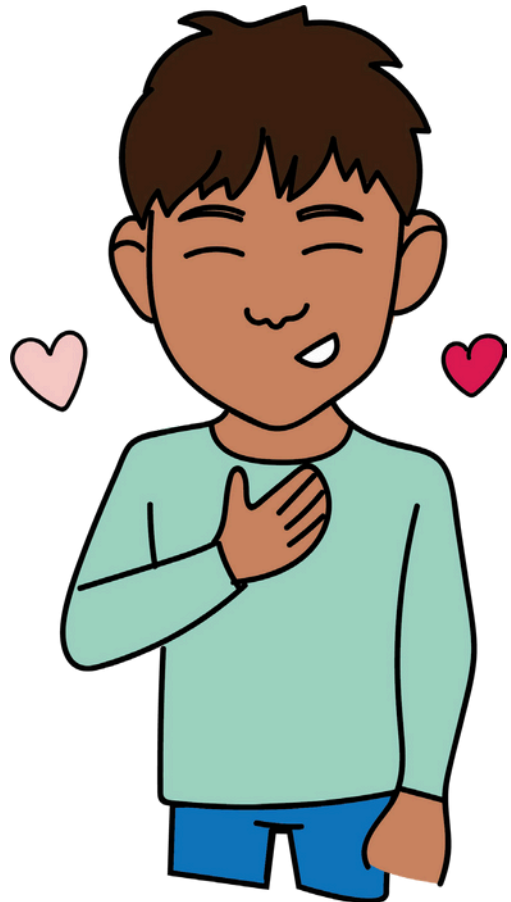
Share a time when someone has done **something kind for you** this week. Describe how it made you feel.



Think about someone special in your life. **What makes them special**, and how will you let them know this week?



Who made you **feel cared** for this week? What actions did they take?



TO LEARN MORE ABOUT THE RESILIENCE PROJECT, HEAD TO:



@theresilienceproject__



The Resilience Project



The Resilience Project



theresilienceproject.com.au

2025 NSW Premier's Reading Challenge



The NSW Premier's Reading Challenge is now open and Eltham Public School is excited to be participating!

What is the NSW Premier's Reading Challenge?

The PRC is a statewide Challenge that encourages students to develop a love of reading for leisure and pleasure in students and enables them to experience quality literature. It is not a competition, but a challenge to encourage each student to read, to read more, and to read more widely. All students who complete the challenge and have their reading record validated by the school's PRC coordinator will receive a certificate signed by the Premier of NSW.

How many books do students need to read?

Students in Kindergarten to Year 2 are challenged to read or experience 30 books. 20 of these books must be from the relevant Challenge booklists, and up to 10 books can be personal choice books. Books can be read with a parent, carer, teacher or another student.

Students in Year 3 to Year 6 are challenged to read 20 books independently. At least 10 of these books must be from the relevant Challenge booklists, and up to 10 books can be personal choice books.

If a book is from an approved PRC series, students can enter up to 5 books as Challenge books, and can read up to 10 other books from the same series as Personal Choice books. More information on the rules of the Challenge can be found on the [PRC website](#).

How do students log their reading?

Students record their reading on the Personal Reading Log and submit it to the PRC Coordinator by 11th August 2025, who will complete the reading log on the students' behalf.

How can students find books on the NSW PRC challenge lists?

In library lessons students will be given assistance to locate books to borrow by Ms Watson, and the SLISO's. Some of the books will be read aloud to them and recorded on a class log in K-2, which Ms Watson will upload digitally in August. When the library is open at lunch times the leaders on duty can assist students to find specific titles.

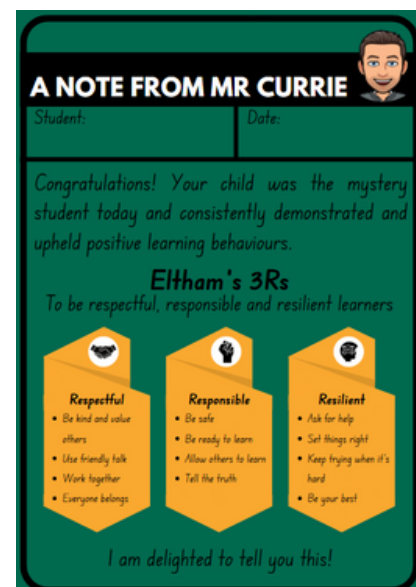
At Richmond/Tweed Regional library all the branches have NSW Premier's Reading Challenge books available for students to borrow and complete the Challenge. Parents and students can explore the full list of available titles in the library catalogue. To make it even easier, all PRC books are free to reserve and can be collected from the most convenient branch. In the library, students will find colour-coded stickers on PRC books, helping quickly identify titles for different year categories.

Hannah Watson
PRC Coordinator at Eltham Public School

Classroom News - Junbung

Term 2 is shaping up to be another dynamic and engaging term filled with learning, growth, and new experiences. We have started incorporating new activities into our routines and are actively acknowledging and celebrating consistent learning behaviours.

Each day brings a thrilling surprise as we randomly select two mystery students! If they consistently embody the Eltham 3Rs—Respectful, Responsible, and Resilient Learner—they will earn the chance to take home a special card from Mr. Currie. Will today be the day for our lucky stars?



Every day after lunch, students will focus on building their reading stamina, which means improving their ability to concentrate on a book without getting distracted. Additionally, we will be making progress on the Premier's Reading Challenge. After each reading session, two students will get the chance to share their thoughts on the book or part of the book they've read. Will their recommendations convince us to pick their book for our next reading adventure?

To add some fun to our spelling and vocabulary practice, students have been diving into a game of **Boggle**, where they sort letters into graphemes to create as many words as they can! It's a fantastic way to challenge their creativity and word skills while having a blast!



Get ready for some number-crunching fun with **Noggle**, our exciting new number reasoning activity! Students get to flex their maths muscles by manipulating numbers to craft creative number sentences using the four operations. How many can you come up with? Let the number adventure begin!

First North Cross Country

Eltham Public School students recently took part in the annual Cross Country Carnival, bringing energy, enthusiasm, and a great sense of school pride. With the sun shining and the course ready, our runners gave it their all in a day filled with determination and school pride.

We are incredibly proud of all our students for their effort and participation on the day. Every student showed excellent behaviour and represented our school with pride.

A special congratulations goes to the following students who placed and have qualified to compete at the upcoming Northern Rivers Zone PSSA Cross Country Carnival:

- **8/9 Years Girls:** Hattie – 3rd Place, Jemma – 4th Place
- **10 Years Boys:** Ewan – 2nd Place
- **11 Years Girls:** Nalu – 2nd Place, Izzy – 3rd Place, Luna – 1st Reserve
- **11 Years Boys:** Arki – 3rd Place, Will T – 4th Place
- **12/13 Years Boys:** Will K – 4th Place

We wish these students the best of luck as they prepare to represent Eltham Public at the Zone Carnival!



Evie with her
second place ribbon

NSW State Swimming Champs

At the end of last term, Eltham Public School was proudly represented at the NSW State Swimming Championships by Hattie, who competed in the Under 9 Girls Freestyle event.

Hattie swam an impressive race, finishing 13th in the state with a time of 37.15 seconds—just 0.9 seconds off her personal best! Her hard work, determination, and positive attitude in the lead-up to the event were truly inspiring.

Eltham Public School is incredibly proud of Hattie's achievements and the way she represented our school at such a high level. Well done, Hattie!



Hattie

Northern Rivers PSSA Sport Zone Trials

Eltham is part of the Northern Rivers Zone Primary Schools Sports Association (NRPSSA). As part of the NRPSSA students in Years 5 and 6 who have well developed skills in specific sports, or those in Year 4 who demonstrate exceptional skills in specific sports are invited to trial for zone teams. Students who participate in the trials generally play the sport outside school. Travel to and from the trials is by private vehicle and needs to be coordinated by parents. By attending these trials, students must be willing and available to represent at the North Coast Trials in their respective sport. A levy, which varies between sports, also needs to be paid to the school when the permission note is returned.

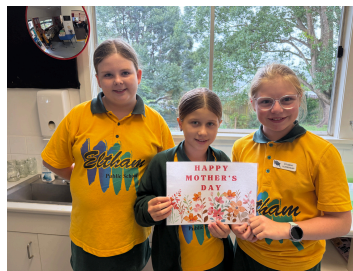
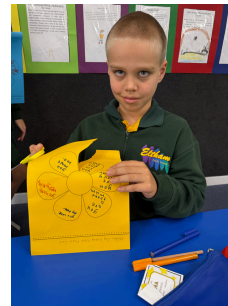
Please make note of the following sport trials and dates for Term 1 & Term 2. Permission notes and trial information are available from Mr Currie or Debi and should be returned with the levy to the office by the return date. Alternatively, you can visit the [NRPSSA website](#) for more information and permission notes. The calendar on this website also includes the North Coast Trial Dates and information.

Northern Rivers PSSA Sport Trials and Dates

Sport and Location	Date of Trials	Permission Note Return Date
Term 2		
Girls Netball (Lismore)	Tuesday 13th May	OVERDUE
Rugby Union (Wollongbar)	Wednesday 11th June	Monday 2nd June
Football/Soccer (Yamba)	Monday 16th June	Wednesday 4th June
Touch Football (Goonellabah)	Wednesday 18th June	Tuesday 10th June

Happy Mother's Day from Eltham PS

We hope all the mums and mother figures in our school community had a wonderful Mother's Day, filled with love and appreciation!



Egg Hunt Excitement

Our students had a wonderful time collecting eggs during our Egg Hunt on the last day of school last term. It was a joyful way to wrap up the term with plenty of smiles, excitement, and teamwork.

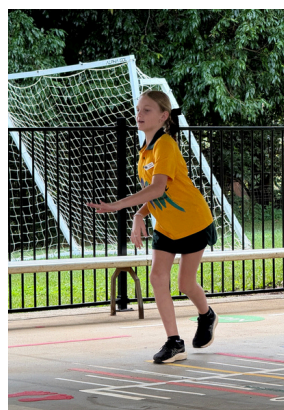
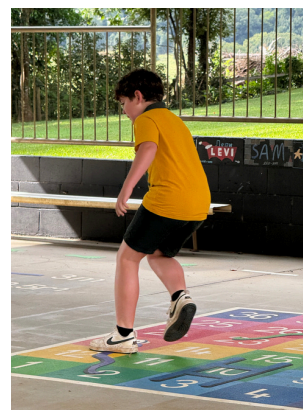


ANZAC Day Commemoration

A very big thank you to our students who attended the ANZAC march in Lismore on 25 April. We had 22 students attend this year, our biggest group to date! Although it was a wet morning, the rain held off for the March and we were able to sit underneath umbrellas for the brief showers during the service. I would like to extend a heartfelt thank you to Will, Luna, and Tom's Nan, Gillian, for knitting beautiful red poppies for our students and staff to wear during the march and service. Your thoughtful gesture was truly appreciated. I also want to express my gratitude to Anna for handcrafting our lovely school wreath for the ANZAC assembly; I received numerous compliments about its beauty. We are incredibly fortunate to have generous, creative, and thoughtful people like Anna and Gillian who contribute so much to our school community. Thank you!



Playground Pics - Handball Highlights



Birthday Wishes

A very big happy birthday to Arki, Sunday, Seb, Sage, John G, Ivan and Leo who celebrated their birthdays since the last newsletter! We hope you all had a great day!

And a special shoutout to Mason, who is celebrating his birthday today—have an amazing day!

And to Arlo, Ewan, Izzy and Monroe, who will be celebrating their birthdays before our next newsletter – we wish you a very happy birthday in advance! May your special day be filled with happiness and fun!



Community Notices

Professional and fun tennis lessons for children and adults.

Tennis 4ever

Eltham Public School Tennis Times

Before School Tennis

8:15AM To 9AM Wednesday and Thursday
Everyone is welcome.
You can book in for a free trial session to try tennis.
Active Kids Vouchers accepted. \$90 full term.

After School at Clunes Tennis Club

Everyone Welcome
4pm to 4:45pm Tuesday and Wednesday
Opportunities to play in local junior league competition.

Contact Coach Julie to enrol!

Phone - 0427922900
Email - julie.gleeson70@gmail.com

Julie Haydon 0427 922 900



Duck Creek
Film Society

with support from
Alstonville Plateau Historical Society
and Alstonville Public School



What's Love got to do with it?

"A delight from start to finish"

Saturday 17 May

Alstonville Public (Primary) School

6 pm: Gates open. Live music - L'Oiseau duo
Fingerfoods & beverages available to buy
7.15pm - 9.30pm: Film (includes intermission)

Membership tx:
\$12.50 online prepay, \$14 at door
<https://events.humanitix.com/what-s-love-got-to-do-with-it>
duckcreekfilms@gmail.com



Drama After School!

6 Weeks of Fun, Games & Drama Skills

When: Mondays, 12th May – 16th June (Term 2)
Time: 4:00 PM – 5:15 PM
Where: Bexhill Public School Library
Who: Primary School Students – Years 4 to 6

Why Drama?

Drama classes provide a space for...

- 🌟 Creative play
- 🧠 Thinking skills
- 🎭 Mime, improvisation & skits
- 🗣️ Vocal techniques
- 🌟 Confidence building
- 🤝 Teamwork & social engagement

Cost: \$50 for the full 6-week program
(Please pay in Week 1)

Led by **Cathy McEwen** - Creative Arts Specialist with years of experience teaching drama in primary schools. Limited spaces – small group setting! All students welcome!

A safe, supportive space to grow, imagine and perform!

📞 Enquiries: Cathy McEwen ☎ Phone: 0404 386 701

Community Notices

RRK-Can-20250311



Many tracks, one road, sustaining community.
Northern Rivers Community Gateway

My Awesome Day at Rainbow region Kids OUTSIDE SCHOOL hours childcare



After school, the RRK educators pick us up, and we dive into a **fun afternoon**. Today, it's all about **craft**! We cut, glue, and sprinkle glitter everywhere—oops! I make a **colourful** mask, while my friends create puppets and cards. Before I know it, Mum's here. "Look what I made!" I say, holding up my masterpiece with a big **smile**.

RRK is a PLACE for CREATIVITY, FRIENDSHIP and FUN... every day is an adventure!

**BOOK
now**



Call **0429 640 075** (9AM to 3 PM)
Email rrkassist@nrcg.org.au
Web nrcg.org.au/rrk

STEWART HOUSE CHARITY DRIVE

Stewart House provides essential medical care, confidence-building activities, and a supportive environment where public school children in need can reset, thrive, and embrace a brighter future.



Envelopes must be returned to enter the draw!

Draw: Friday, 23 May 2025

Important:

Online payments ARE NOT an automatic entry into the draw.

Please return your envelope(s) to your school with a receipt number (if paying online) for entry in the draw.



SCAN TO PAY ONLINE



AFTER-SCHOOL HOCKEY PROGRAM

**Learn to Play
& Skill Development**

**2nd Term
Eltham
Public School**

Training Day for your school is ...
TUESDAYS

- ★ Start 13th May- First Session- FREE
- ★ 5-12 Years- Any skill & fitness ability
- ★ 3.00 to 4.30pm- School Sports Field
- ★ \$40- Term 2
- ★ No Equipment needed

1st Session FREE

REGISTER-Scan here

0411 144 799
@ summerlandershockeyclub@gmail.com
REGISTER On-line at:
revolutionise.com.au/fnchl/events/294060